

WZORNIK

DRUKU FARBAMI LED UV
I USZLACHETNIEŃ



T O L E K

DRUKARNIA

ZiNG

 **LAKFOL**

 **UV
INKS**



PENTACLEAR PET-GAG
0,3 mm



LAHNIT WHITE
90 g/m²



**EUROTAK PVC
WHITE GLOSS**

110 g/m² PERM



**EUROTAK PVC
TRANSPARENT GLOSS**

105 g/m² PERM



IMITLIN METAL
SILK E21 SILVER

130 g/m²



CONSTELLATION
JADE E36 RICCIO

215 g/m²



MATERICA KRAFT
250 g/m²



IMPRESTA BLACK
300 g/m²



DIVERSO
NATURAL MATT
300 g/m² / 100% recycling



DIVERSO NATURAL OFFSET

150 g/m² / 100% recycling



DIVERSO
WHITE OFFSET

140 g/m² / 100% recycling



SAPPI MAGNO GLOSS
300 g/m²



SAPPI MAGNO SATIN
300 g/m²



SAPPI MAGNO SATIN

130 g/m²



CORE UNCOATED
190 g/m²



FUSION TOPLINER
180 g/m²



URUS LINER
230 g/m²



MERCADO 2SC
300 g/m²



MERCADO 1SC
300 g/m²



MERCADO 1SC VOLUME
300 g/m²



GREYBACK
250 g/m²



UNIBOARD-S
350 g/m²



YUKON HB
270 g/m²



NEO BOARD

210 g/m²

TOLEK

UL. ŻWIRKI I WIGURY 1
43-190 MIKOŁÓW
TOLEK.COM.PL

ZING

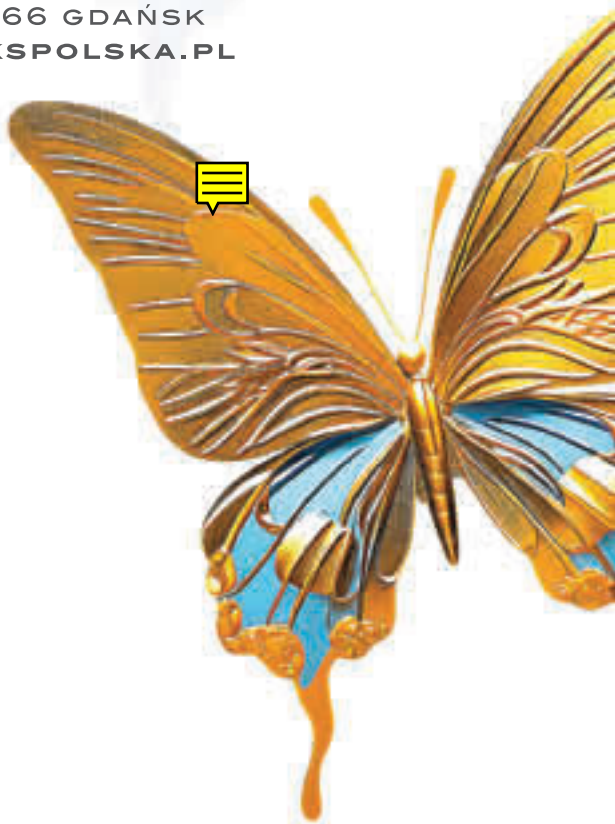
AL. JEROZOLIMSKIE 212
02-486 WARSZAWA
ZING.COM.PL

LAKFOL

UL. MŁYŃSKA 23
43-300 BIELSKO-BIAŁA
LAKFOL.COM

UV INKS

AL. GRUNWALDZKA 209
80 - 266 GDAŃSK
UVINKSPOLSKA.PL



TOLEK 2025

Pierwsza karta wzornika wydrukowana na materiale:
VIPRINT STARWHITE PP 0,3 mm

Ostatnia karta wzornika wydrukowana na materiale:
NEO BOARD 350 g/m²